

## Equipment provided as standard

### Disability Bedroom

- Twin Scan 700 adjustable 3ft beds
- Apollo pressure-care mattresses/inco protectors
- Sliding bed table
- Carter bedroom-to-bathroom overhead hoist
- Alarm call to upstairs bedroom
- Portable intercom
- Rise-recline armchair with removable arms

### Disability bathroom

- Electrically height adjustable wash-hand basin
- Clos-o-Mat toilet
- Parker Sovereign bath with thermostatically controlled taps, hair washing unit and hoist seat
- Wheelchair accessible shower
- Washing machine with Braille panel
- Tumble dryer with Braille panel
- Stainless steel medical dressing trolley

### Kitchen

- 'Talking' Microwave
- Halogen hob at wheelchair height
- Electric oven with side opening door
- Dishwasher
- Refrigerator with small freezer shelf
- Heat-proof mugs
- Angled cutlery
- Plate guards
- Conventional utensils & crockery

### Sitting room

- Television & video recorder
- Music centre with CD player
- Board games suitable for sight impaired

### Upstairs

- Bedroom 2 with 5ft double bed
- Bedroom 3 with two 3ft twin beds
- Bathroom with shower
- Sitting area with music centre

**Further specialist items available on request**

**This brochure is available in Braille  
or electronic format.**

# BERWICK COTTAGE



Berwick Cottage is situated in the Norfolk village of East Harling in a region known as Breckland. The cottage sleeps 6 (2 with disabilities) and is let by the week on a self-catering basis. It has a range of equipment to cope with even the most profound disabilities (see reverse).



East Harling is well served with shops, pubs, a church, a pharmacy and medical centre. It is within an hour's drive of Great Yarmouth, Lowestoft, the Norfolk Broads, Bressingham Gardens and Steam Railway, and Banham Zoo. For further information on local attractions please contact the East of England Tourist Board or visit [www.brecks.org](http://www.brecks.org).

## The Lin Berwick Trust

Holiday accommodation for people  
with disabilities, their families  
and carers.

Registered Charity No. 1083039

## Open-plan kitchen and sitting room



The open-plan kitchen/sitting room is ideal for wheelchair access. Double doors lead from the sitting room area to a paved outdoor terrace with barbecue and secluded garden.

The kitchen is fully equipped with conventional utensils as well as disability aids, such as a 'talking microwave', side-opening oven, hob at wheelchair height and angled cutlery.

## The village of East Harling



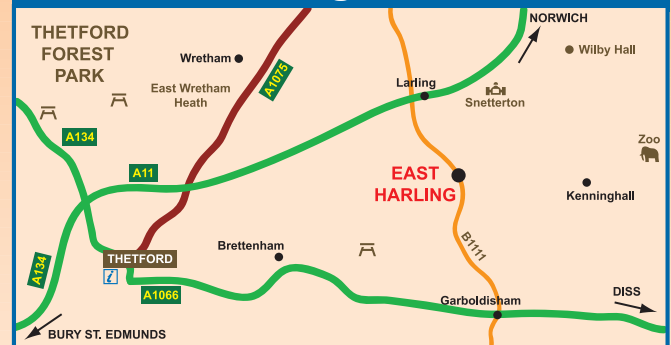
Enjoy a delicious meal at the Nag's Head, shop for essential items at the High Street grocer or just enjoy the peaceful tranquillity of this charming Norfolk village.

## Disability bedroom



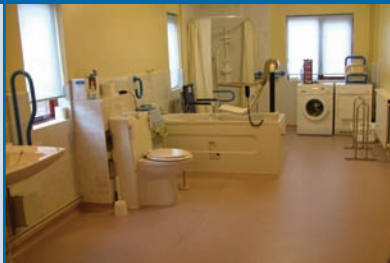
The disability bedroom has two electrically adjustable Scan 700 beds, pressure care mattresses and an overhead hoist to the en-suite bathroom.

## How to get there



## Disability bathroom

The en-suite disability bathroom has a wheelchair shower, Parker Sovereign bath, Clos-o-Mat toilet and height adjustable basin.



## For further information please contact:

The Administrator  
Eastgate House, Upper East Street  
Sudbury, Suffolk CO10 1UB  
Tel/Fax: 01787 372343  
Email: [info@thelinberwicktrust.org.uk](mailto:info@thelinberwicktrust.org.uk)  
[www.thelinberwicktrust.org.uk](http://www.thelinberwicktrust.org.uk)